

## Dyemill Lodges (Arran) Ltd

Our Scandinavian pine lodges offer comfortable accommodation in surroundings full of natural beauty and interest. The six Lodges are well spaced and set in three acres of secluded, undulating woodland, accessed via a private gated bridge over the picturesque Monamhor Burn. Forestry woodland borders the site providing beautiful walks, picnic areas and off-road cycle tracks. Dyemill is within a 15 minutes walk of all the amenities of Lamlash village including cafes, restaurants, bars, a variety of shops and a post office, and so is ideally situated for those seeking tranquillity with civilisation not too far away.



### THE LODGES

All of the lodges have large picture windows, and a pleasant outlook over the site. They are maintained to a high standard, well insulated and double-glazed. The internal space has been carefully designed to provide comfortable accommodation for up to four people, and outside is a covered verandah with patio chairs.

**Living/Dining Area:** This area is comfortably furnished with two sofas, a coffee table, colour television with DVD player, and pine dining suite. A cast iron log-effect electric fire and convector radiator provides heating for those cooler evenings. This area also has several spacious storage cupboards.

**Kitchen:** The kitchen is very well equipped with an electric cooker, refrigerator, microwave, toaster, cafetière, electric kettle and a good selection of crockery, cutlery and cooking utensils.

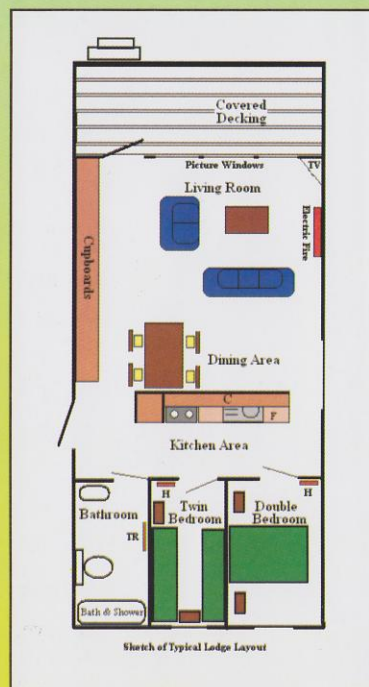
**Bedrooms:** Both bedrooms have thermostatically controlled electric wall heaters, and all beds are provided with duvets pillows and bed linen. The double bedroom has bedside tables, reading lamps and a 4'6" divan bed. The second bedroom is equipped with a bedside table, lamp, and two 2'6" x 6'3" single beds.

**Bathroom:** The bathroom has a bath with an electric shower over it, washbasin, toilet, electric razor socket and heated towel rail. A non-slip shower mat and a bath mat are provided, however towels are **not** provided as standard.

**Travel Cot:** A travel cot is available on request.

**Additional Equipment:** An iron, ironing board, vacuum cleaner and general cleaning materials are provided in each lodge.

**Electricity:** Electricity is paid for by £1.00 coin meters.



**Access:** Most of the lodges are accessed via a slope and steps. However, we have one that is on level ground with just a couple of steps up to it, which may be booked by anyone with walking difficulties.

**Car Parking:** There is a secure on site car park a short distance from the lodges, with an additional unloading area closer by.

**Laundry:** There is a laundry room with a washing machine, tumble dryer (both operated by 50p coins), an electric iron, ironing board, and laundry basket. Washing powder and fabric conditioner is provided.

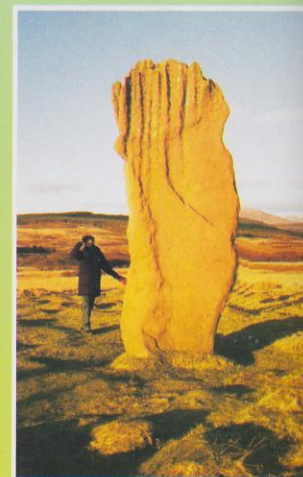
**Dogs:** Well-behaved dogs are accepted by prior arrangement. Owners must ensure the site is kept free of dog waste and comply with our simple "Dog Charter". A supplement will be charged.

**Letting Periods:** The letting period is from Saturday at 4pm to Saturday 10am. Shorter breaks may be available during off peak times.

### ARRAN

Arran is approximately 20 miles long and 10 miles wide, and has some of the most spectacular and beautiful scenery in Scotland. It is often described as Scotland in miniature "the highlands" being in the north with magnificent mountains, glens, wild moorland and mountain streams dominated by Goatfell the highest of the peaks at 2866 feet, and "the lowlands" in the south with undulating hills, forests and moors.

There is a road that circles the island some 56 miles long, passing through picturesque villages providing a variety of good places to stop and eat, and some lovely sandy coves and beaches such as the one at Blackwaterfoot. Two roads cross the island East to West taking you through the less populated centre.



## ACTIVITIES

**Walking:** Arran provides wonderful walking ranging from The Coastal Way around the island, hiking through forests or glens, strolling on the beaches, to ridge walking in the north climaxing with the peak of Goatfell at 2866ft.



**Cycling:** Cycles can be hired from several places, and the island offers good on and off road cycling.

**Riding & Trekking:** Pony trekking is available at Blackwaterfoot and Sannox. Beginners as well as the more experienced are catered for.

**Fishing:** Burn, loch and sea angling is available to the public. For shore fishers there are miles of easily accessible beach where good sport may be enjoyed in peace and safety.

**Golf:** There are seven golf courses all providing a pleasurable game in wonderful surroundings. Competitions are run regularly throughout the year at most courses.

**Bowling & Tennis:** Bowling greens are open to visitors at Brodick, Lamlash and Whiting Bay. Tennis courts are available in most villages

**Boat Hire:** Rowing boats and dinghies are available for hire at Brodick, Lamlash and Whiting Bay.

**Adventure:** sailing, diving, quad bike safaris, paragliding, and abseiling are some of the adventure activities to be found on the island.

**Relaxing/Well-being:** practitioners of reflexology, aromatherapy, massage, reiki healing, homeopathy, acupuncture, herbal medicine and other natural and complementary medicines are available on Arran, as well as the more conventional health spa treatments.

**Special Interests:** Arran is a haven for those interested in wildlife, history or geology. It has a diverse range of animals, birds and plants including Otters, Golden Eagles and the unique Arran Whitebeam. There are numerous historic sites from Neolithic tombs and standing stones to Brodick Castle. Arran has fine examples of many types of rock and their formations, which regularly attract geology students for their field studies.

Dyemill House  
Monamhor Glen  
Lamlash  
Isle of Arran  
KA27 8NT

Tel: 01770-600 419

Email: [enquiries@dyemill.co.uk](mailto:enquiries@dyemill.co.uk)  
Website: [dyemill.co.uk](http://dyemill.co.uk)

## Dyemill Lodges (Arran) Ltd



Dyemill House  
Monamhor Glen  
Lamlash  
Isle of Arran  
KA27 8NT

Tel: 01770-600 419

Email: [enquiries@dyemill.co.uk](mailto:enquiries@dyemill.co.uk)  
Website: [dyemill.co.uk](http://dyemill.co.uk)

*Paul & Sue Archer*